

IDAT

International Diagnostic & Admissions Test

PRACTICE TESTS

WITH ANSWERS

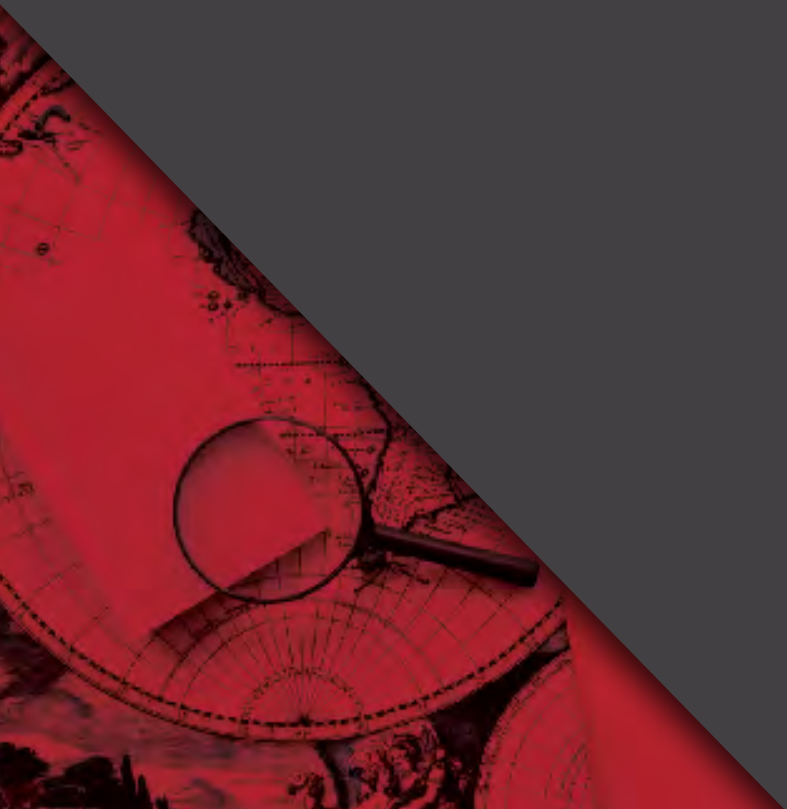
2

STAGE 5

English /

Mathematics /

Global Knowledge /



STAGE 5

Year 9 - Year 10

SUBJECT	DURATION	TEST COMPONENT	AMOUNT
English	105 mins	Grammar, Vocabulary & Reading (45 mins)	26
		Writing (35 mins)	2
		Interview (25 mins)	10
Math	35 mins	Equations	2
		Algebra	2
		Lines & Polygons	2
		Transformation	2
		Chance, Rate & Ratio	2
		Fractions & Decimals	2
		Algebraic Fractions	2
		Formulas	2
		Area & Volume	2
		Time & Scale	2
		Mean, Graphs & Tables	2
Global Knowledge	15 mins	Logic — IQ style testing of patterns, space & problem solving.	6
		Science	6
		Technology	6

Grammar & Vocabulary

1. Choose the best phrase to complete the sentence.

Tokyo, _____, has a high population.

- A. which is the capital of Japan
- B. where is Japan's capital
- C. what is the capital of Japan
- D. what is the capital of Japan

2. Choose the best word to complete the sentence.

____ it was quite expensive, I think it was worth it.

- A. Although
- B. Despite
- C. Even
- D. Which

3. Which sentence uses the comma correctly?

- A. It was raining, heavily so I took an umbrella.
- B. It was raining heavily, so I took an umbrella.
- C. It was raining heavily so, I took an umbrella.

4. Choose the best preposition to complete the sentence.

I prefer to sit ____ the back ____ the cinema.

- A. on / of
- B. at / of
- C. at / on
- D. on / in

5. Choose the best verb to complete the sentence.

Every man and woman ____ saved.

- A. were
- B. was
- C. have been
- D. weren't

6. Choose the correct prefix to complete the sentence.

In many countries, it is _legal to keep a gun.

- A. il
- B. un
- C. ir
- D. dis

7. Choose the best word to complete the sentence.

The garden party was a success ____ the poor weather.

- A. in spite of
- B. despite of
- C. even though
- D. even

8. Which sentence contains an error?

- A. Colin' job is very difficult.
- B. She believes in the healing powers of Chinese Traditional Medicine.
- C. The book has sold millions of copies.
- D. However, it was the least she could do.

9. After which word should the comma be placed?

When she entered the room after all those years she could still feel his presence.

- A. entered
- B. years
- C. could
- D. after

10. Which word could not finish this sentence?

My sister is taller than ____.

- A. me
- B. her
- C. he
- D. him

11. Choose the option that has the closest meaning to the underlined word.

Conflict between the two nations has escalated in the last few years due to the ongoing battle over the price of oil.

- A. diminished
- B. lessened
- C. increased
- D. improved

12. Choose the option that has the closest meaning to the underlined word.

The movie had a profound effect on the students, who couldn't stop thinking about it afterwards.

- A. light
- B. kind
- C. deep
- D. terrible

13. Choose the option that has the closest meaning to the underlined word.

Temperatures will fluctuate between the high 20s and low 30s tomorrow.

- A. stick
- B. vary
- C. go up
- D. go down

14. Choose the option that has the closest meaning to the underlined word.

In today's world, items such as typewriters have become almost obsolete.

- A. modern
- B. expensive
- C. cheap
- D. old-fashioned

15. Choose the option that has the closest meaning to the underlined word.

When her private emails were leaked online, she was absolutely mortified.

- A. humiliated
- B. furious
- C. delighted
- D. amazed

16. Choose the option that has the closest meaning to the underlined word.

The film was praised for its authentic portrayal of the former president.

- A. false
- B. accurate
- C. pleasant
- D. harsh

Reading

Orphan Train - by Christina Baker Klein

I believe in ghosts. They're the ones who haunt us, the ones who have left us behind. Many times in my life I have felt them around me, observing, witnessing, when no one in the living world knew or cared what happened.

I am ninety-one years old, and almost everyone who was once in my life is now a ghost.

Sometimes these spirits have been more real to me than people, more real than God. They fill silence with their weight, dense and warm, like bread dough rising under cloth. My gram, with her kind eyes and talcum-dusted skin. My da, sober, laughing. My mam, singing a tune. The bitterness and alcohol and depression are stripped away from these phantom incarnations, and they console and protect me in death as they never did in life.

I've come to think that's what heaven is — a place in the memory of others where our best selves live on.

Maybe I am lucky — that at the age of nine I was given the ghosts of my parents' best selves, and at twenty-three the ghost of my true love's best self. And my sister, Maisie, ever present, an angel on my shoulder. Eighteen months to my nine years, thirteen years to my twenty. Now she is eighty-four to my ninety-one, and with me still.

No substitute for the living, perhaps, but I wasn't given a choice. I could take solace in their presence or I could fall down in a heap, lamenting what I'd lost.

The ghosts whispered to me, telling me to go on.

1. How does the narrator feel about ghosts?

- A. She doesn't believe in them.
- B. She doesn't know how she feels about them.
- C. She feels that they have been there for her when people who are alive haven't.

2. Whose ghost does the narrator not mention in the text?

- A. Her mother
- B. Her father
- C. Her love
- D. Her friend

3. What is the narrator's interpretation of heaven?

- A. It is a place on Earth.
- B. Good parts of people who have died but live in our memories.
- C. She doesn't believe in heaven.

4. How old was the narrator when her parents died?

- A. 9 years old
- B. 13 years old
- C. 23 years old
- D. 20 years old

5. I could take solace in their presence or I could fall down in a heap, lamenting what I'd lost.

What does the narrator mean here?

- A. Being sad is better because she had lost so many people.
- B. The ghosts in her life helped her from becoming depressed.
- C. She wanted to fall down and give people presents.
- D. She got lost while walking and fell down.

The Hunger Games - by Suzanne Collins

When I wake up, the other side of the bed is cold. My fingers stretch out, seeking Prim's warmth but finding only the rough canvas cover of the mattress. She must have had bad dreams and climbed in with our mother. Of course, she did. This is the day of the reaping.

I prop myself up on one elbow. There's enough light in the bedroom to see them. My little sister, Prim, curled up on her side, cocooned in my mother's body, their cheeks pressed together. In sleep, my mother looks younger, still worn but not so beaten-down. Prim's face is as fresh as a raindrop, as lovely as the primrose for which she was named. My mother was very beautiful once, too. Or so they tell me.

Sitting at Prim's knees, guarding her, is the world's ugliest cat. Mashed-in nose, half of one ear missing, eyes the color of rotting squash. Prim named him Buttercup, insisting that his muddy yellow coat matched the bright flower. He hates me. Or at least distrusts me. Even though it was years ago, I think he still remembers how I tried to drown him in a bucket when Prim brought him home. Scrawny kitten, belly swollen with worms, crawling with fleas. The last thing I needed was another mouth to feed. But Prim begged so hard, cried even, I had to let him stay. It turned out okay. My mother got rid of the vermin and he's a born mouser. Even catches the occasional rat. Sometimes, when I clean a kill, I feed Buttercup the entrails. He has stopped hissing at me.

Entrails. No hissing. This is the closest we will ever come to love.

I swing my legs off the bed and slide into my hunting boots. Supple leather that has molded to my feet. I pull on trousers, a shirt, tuck my long dark braid up into a cap, and grab my forage bag. On the table, under a wooden bowl to protect it from hungry rats and cats alike, sits a perfect little goat cheese wrapped in basil leaves. Prim's gift to me on reaping day. I put the cheese carefully in my pocket as I slip outside.

6. When the narrator wakes up, she finds she is in bed ____.

- A. alone
- B. with Prim
- C. with her mother
- D. with Prim's cat

7. How does the narrator feel her mother looks when she is asleep?

- A. Not as old as she does when she is awake.

B. Older than she does when she is awake.

C. The same as she does when she is awake.

8. Why does the narrator think the cat distrusts her?

- A. She doesn't feed it.
- B. She once tried to kill it.
- C. She said it was ugly.
- D. It doesn't catch enough rats.

9. Entrails. No hissing. This is the closest we will ever come to love.

What does this sentence mean?

- A. She loves the cat even though the cat hisses at her.
- B. The narrator's relationship with the cat is better because she sometimes feeds the cat.
- C. The narrator and the cat will never like each other.
- D. The cat doesn't hiss at the narrator but still hates her.

10. Who wrapped the goat cheese in basil leaves?

- A. The narrator's mother.
- B. The narrator.
- C. The narrator's sister.
- D. The cat.

Writing

1. Imagine you are your favourite superhero. Write a story about a day in your life.

Write at least 7 sentences.

Your answer:

2. Write an essay describing the advantages and disadvantages of being famous and include whether or not you would like to be famous and why.

Write at least 15 sentences.

Organise your ideas into at least 2 paragraphs.

Your answer:

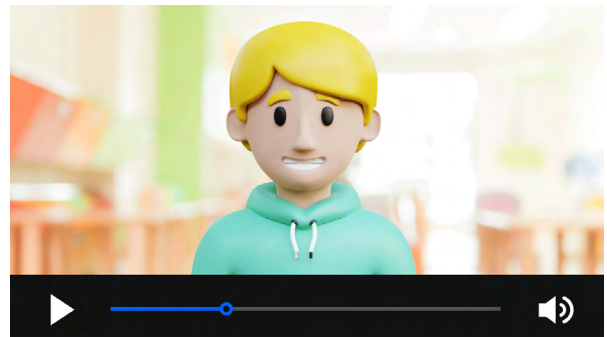
Interview

The interview is conducted by an avatar and students spoken answers are recorded.

The questions are asked by an avatar. Students can push a button to have the question repeated, asked in another way, or asked more slowly. They can only use each of these buttons once, but it will deduct 1 point each time it is used. The student can take notes on blank paper before speaking but the paper must stay in the room. Students are encouraged not to read off the paper when they speak, as it will not help the student to make eye contact and a good impression. The student presses a button when he or she is prepared to answer, and this will video record their answers. Students are expected to give lengthy answers (limited to 2 minutes per answer) which provide insight into who they are and show the school their speaking and comprehension skills for listening.

When a student has finished recording their answer, they push the button for the next question. No answer or speaking can be erased and tried again. There is one try only.

Prospective or current schools allocated by the student may view this interview with a one-time login password when results are available.



Sample Questions:

1. Hey there, I come from a virtual world for you. Who are you? Please introduce yourself to me.
2. Tell me about your family.
3. What subject do you not like at school?
4. I don't really like tests, but why are you taking this test today?
5. Most people take this test because they are applying to a school, new program, or going to a new class. Why are you looking or wanting to change to something new?
6. Listen to a story and answer questions.
7. Who is someone you admire? And why?
8. Do you ever tell lies? Tell me why or why not.
9. Tell me about something you wanted in your life that you worked really hard for and achieved.
10. I've really asked a lot of questions today, but is there anything else you would like to tell me?

/ MATHEMATICS

1. A real estate agent received a 6% commission on the selling price of a house. If his commission was \$8,800, what was the price of the house?

A. \$148,000
B. \$146,666
C. \$164,000
D. \$136,000

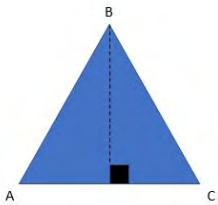
2. Find all rational zeroes of $P(x) = x^3 - 7x + 6$

A. $x = -3, 1, 2$
B. $x = -2, 0, 2$
C. $x = 0, 1, 3$
D. $x = -1, 0, 2$

3. An item sells for \$20 per kilogram. What is the cost in cents per gram for this item?

A. \$0.02 cents per gram
B. \$0.2 cents per gram
C. 2 cents per gram
D. 20 cents per gram

4. In triangle ABC, Angle A is 50° and Angle C is 50° . What can we tell about triangle ABC?



A. Angle B = 80°
B. Side AC = Side BC
C. Side AB = Side BC
D. Angle B is 80° and side AB = Side BC

5. What is the relationship of the slopes below?

Line 1: $m = 2$

Line 2: $m = -2$

A. parallel
B. perpendicular
C. They are the same line.
D. neither parallel or perpendicular

6. Which polygons always have 4 congruent sides?

A. square and rectangle
B. square and rhombus
C. rhombus and rectangle
D. parallelogram and square

7. Simplify.

$$\frac{x(x+1)}{6} \cdot \frac{2}{x^2-1}$$

A. $\frac{x}{3(x-1)}$

B. $\frac{x+2}{3x}$

C. $\frac{2x}{3(x+1)}$

D. $\frac{x+1}{2x-1}$

8. Solve for t .

$$0.35t - 0.2 = 0.15t + 0.1$$

A. $\frac{3}{2}$

B. $\frac{1}{6}$

C. $\frac{4}{3}$

D. $\frac{9}{7}$

9. Find the 40th term in a sequence where $a_1 = 4$

and $d = -2$.

A. -74
B. -68
C. -82
D. -64

10. Find the sum.

$$\sum_{i=1}^{18} i^2$$

A. 2109
B. 1786
C. 2696
D. 3044

11. A 12 ft x 16 ft rug is placed in the middle of a dining room. There is a 4 foot on each side between the rug and the wall. What is the area of the living room?

A. 320 ft²
 B. 480 ft²
 C. 192 ft²
 D. 144 ft²

12. An ice chest is in the shape of a pentagonal prism. Each side is 3 meters long and 2 meters high. What volume of ice is needed to fill the chest?

Round to the nearest whole number.

A. 31 m³
 B. 28 m³
 C. 37 m³
 D. 26 m³

13. Maya went to the mall to buy some jeans. The original price is \$65, but she has a 15% coupon. If she buys them that day, she will receive an additional 5% off. How much will the jeans cost Maya if she buys them that day?

A. \$55.25
 B. \$52.49
 C. \$52.00
 D. \$54.65

14. If a savings account balance of \$4780 earns 5% interest in one year, how much interest is earned?

A. \$239
 B. \$305
 C. \$176
 D. \$204

15. One printing press can produce a newspaper in 6 hours running alone. A second press could produce the paper in 9 hours running alone. A third press could produce the paper in 12 hours working alone. A late-breaking headline caused the newspaper to change the paper later than usual. If all three presses are run, how long will it take to produce the newspaper?

A. 2.8 hours
 B. 3.4 hours
 C. 2.1 hours
 D. 4.2 hours

16. Steven is an architect that has created a blueprint of a rectangular dining room. The area of the actual dining room is 1600 times larger than the area of the dining room on the blueprint. The length of the dining room on the blueprint is 3 inches. What is the length of the actual dining room in feet?

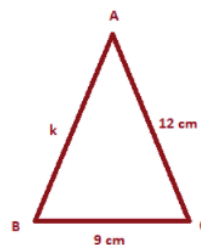
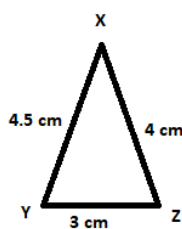
A. 10 feet
 B. 11 feet
 C. 9 feet
 D. 12 feet

17. Ross is planning a date with his girlfriend. He plans for them to watch a movie, go out to dinner, and then attend a sporting event. He is deciding between 5 movies, 8 restaurants, and 2 sporting events. How many different dates can he plan?

A. 80
 B. 15
 C. 45
 D. 60

18. Triangle XYZ is similar to Triangle ABC.

Solve for k.



A. 13.5 cm
 B. 12 cm
 C. 6 cm
 D. 18 cm

19. Solve for x.

$$\frac{5}{|x - 6|} = 20$$

A. $x = \{6.25, 5.75\}$
 B. $x = \{4.15, -7.85\}$
 C. $x = \{2, 6.5\}$
 D. $x = \{1.65, 4.35\}$

20. Solve for n.

$$-6(4n + 6.5) = 26.5 - 4.5n$$

A. -3.36
 B. -4.02
 C. 2.82
 D. 4.79

21. In an experiment, the probability of event A is 0.83. The probability of event B is 0.12. The probability of event B given event A occurs is 0.55.

What is the probability that A and B occur (to 2 decimal

places)?

- A. 0.10
- B. 0.58
- C. 0.46
- D. 0.95

22. What is the average value of the data in the first quartile of the data set {3, 8, 6, 7, 4, 1, 9, 8}?

- A. 5.75
- B. 2
- C. 3.5
- D. 9.5

/ GLOBAL KNOWLEDGE

1. Which word is different from the others?

- A. smile
- B. grin
- C. grimace
- D. taste

2. Tree is to shade as chimney is to _____.

- A. smoke
- B. steam
- C. air
- D. hair

3. The words "LEVEL" and "EQUAL" are _____

- A. similar
- B. contradictory
- C. opposites
- D. not related

4. Which unit of measurement is different from the others?

- A. cm
- B. m
- C. mm
- D. kg

5. One brother says of his younger brother, "Two years ago I was three times as old as my brother was. In three years' time, I will be twice as old as my brother." How old are they each now?

- A. 17 and 7
- B. 15 and 5
- C. 13 and 10
- D. 18 and 8

6. A small number of cards has been lost from a complete pack of 52 cards. If I deal among four people, three cards remain. If I deal among three people, two remain. If I deal among five people, two cards remain. How many cards are there?

- A. 47
- B. 46
- C. 48
- D. 45

7. Mary had a number of cookies. After eating one, she gave half the remainder to her sister. After eating another cookie, she gave half of what was left to her brother. Mary now had only five cookies left. How many cookies did she start with?

- A. 23
- B. 21
- C. 20
- D. 25

8. Which word is different from the others?

- A. desserts
- B. evil
- C. smart
- D. code

9. "GALLANT" and "BOLD" have _____ meanings.

- A. similar
- B. opposite
- C. unrelated
- D. neither similar nor opposite

10. Mike is six years old. He is twice as old as his brother. How old will Mike be when he is one and a half times as old as his brother?

- A. 9 years old.
- B. 8 years old.
- C. 10 years old.
- D. 12 years old.

11. Which two countries were involved in the Space Race?

- A. Russia and The USA
- B. Japan and The USA
- C. Japan and Russia
- D. The USA and China

12. Who was the first man to walk on the moon?

- A. Neil Armstrong
- B. Neil Anderson
- C. Neil Albertson
- D. Neil Aranquez

13. What is renewable energy?

- A. Energy that is made from sources that nature can replace.
- B. Energy that comes from coal, gas, and oil.
- C. Energy that can't be replaced once it's used.

14. Photovoltaic panels are also known as _____.

- A. solar panels
- B. wind panels
- C. water panels
- D. oil panels

15. Solar energy produces _____.

- A. a lot of noise
- B. carbon emissions
- C. no carbon, emissions, or noise
- D. water

16. What is a penstock?

- A. A place to keep your pens.
- B. A type of solar panel.
- C. A pipe through which water flows to produce hydro energy.
- D. A type of bicycle.

17. Which of these statements about a run-of-the-river system is not true?

- A. It is a natural way to generate power from water.
- B. Dams don't have to be built.
- C. There is less impact on the environment.
- D. The river doesn't need to be full year-round for it to stay working.

18. Which of these is not a way to produce hydro energy?

- A. Solar System
- B. Storage System
- C. Run-of-the-river System
- D. Pumped Storage System

/ ANSWER

ENGLISH

Grammar & Vocabulary

Question 1-10: AABBB AAABC

Question 11-16: CCBDA B

Reading

Question 1-10: CDBAB AABBC

MATHEMATICS

Question 1-10: BACDD BAAAA

Question 11-20: AABAA DAAAA

Question 21-22: CC

GLOBAL KNOWLEDGE

Question 1-10: DAADA AADAA

Question 11-18: AAAAC CDA